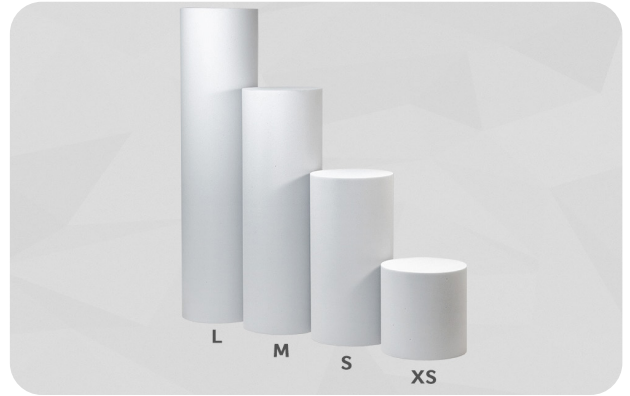


# DATA SHEET



## soni RONDO

- ▶ Our **soni RONDO sound absorbers** are made of high-quality, open-cell melamine foam (Basotect®) with excellent sound absorption properties. The round acoustic elements reduce disturbing reverberation, contributing to pleasant room acoustics and improved speech intelligibility.
- ▶ Available in **four different sizes** and **two colours** (light grey + white), the soni RONDO elements can be arranged individually and used in a variety of ways in both private and commercial spaces – whether in the office, studio or living area.



Basotect® is a registered trademark of BASF SE

### TECHNICAL DATA

<b>FLAMMABILITY MELAMINE FOAM</b>	<ul style="list-style-type: none"> <li>▶ DIN 4102, tested according to B1 (flame-retardant)</li> <li>▶ DIN EN 13501-1 (Details on request)</li> <li>▶ Fulfills the strict fire safety standard for the automotive industry (FMVSS 302, DIN 75 200)</li> <li>▶ ISO 3795, burning rate &lt; 100 mm/min</li> </ul>
<b>TEMPERATURE RESISTANCE</b>	▶ Long-term: -50°C to +180°C, short-term up to +200°C
<b>THERMAL CONDUCTIVITY / EN 12667</b>	▶ ≤ 0.034 W/(m·K) at 10°C (comparable to Styrofoam acc. to WLG 035)

### DIMENSIONS

PRODUCT	LENGTH [mm]	DIAMETER [Ø]	WEIGHT PER ELEMENT
RONDO	XS: 250      S: 500 M: 750      L: 1000	250	XS: 100 g      S: 200 g M: 300 g      L: 400 g

### ADVICE

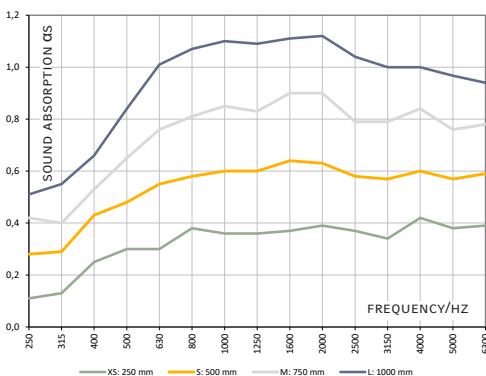
- ▶ For this material, fluctuations in air humidity can lead to dimensional variations beyond the indicated dimension tolerances.
- ▶ Due to the production process, a slight transition may be visible at the cut edge.

### BENEFITS

- ▶ High sound absorption values
- ▶ Optimized room acoustics
- ▶ Excellent flammability characteristics (B1 fulfilled)
- ▶ High ageing stability
- ▶ Free of mineral fibers, physiologically safe

### REVERBERATION ROOM

- ▶ Based on DIN EN ISO 354



### APPLICATIONS

- ▶ For maximum flexibility, soni RONDO sound absorbers can be suspended using the soni HELIX set, whereby the length can be individually adjusted, allowing you to play with different sizes for a varied look. Alternatively, they can be mounted using an N-slot and rail.



### PLEASE SEE OUR PROCESSING AND STORAGE INSTRUCTIONS

Details and values given in this leaflet are average values and have been compiled with care. They are not binding, however, and Cellofoam International GmbH & Co. KG disclaims any liability for any damages and detriments, also in connection with any third party's rights. The information given does not release the buyers from making the necessary experiments and tests themselves. Subject to technical changes. For updates please go to our website.

Cellofoam International GmbH & Co. KG  
Business unit soniflex  
sales@soniflex.de  
www.soniflex.de

### VERSION 01/26

Distribution partner for Switzerland:  
soniflex Switzerland  
einkauf@soniflex.ch  
www.soniflex.ch

#### AIR POCKET TOLERANCES

▶ When melamine foam is produced, air pockets may form that become visible later on when the foam block is cut into sheets. The following tolerances apply for such air pockets:

Face side / edges: Ø up to 5 mm: no restrictions  
Ø 5-15 mm: a maximum of 10 per piece  
Ø 15-25 mm: a maximum of 1 per piece  
Rear face: no restrictions as to size and number

#### PLEASE SEE OUR PROCESSING AND STORAGE INSTRUCTIONS

Details and values given in this leaflet are average values and have been compiled with care. They are not binding, however, and Cellofoam International GmbH & Co. KG disclaims any liability for any damages and detriments, also in connection with any third party's rights. The information given does not release the buyers from making the necessary experiments and tests themselves. Subject to technical changes. For updates please go to our website.

**Cellofoam International GmbH & Co. KG**  
Business unit soniflex  
sales@soniflex.de  
www.soniflex.de

**Distribution partner for Switzerland:**  
soniflex Switzerland  
einkauf@soniflex.ch  
www.soniflex.ch