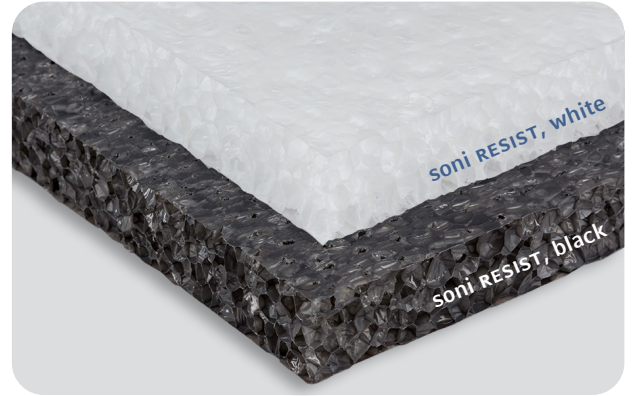


## DATA SHEET

## soni RESIST | soni RESIST UV

- ▶ Our **soni RESIST** noise protection panel consists of closed-cell polyethylene foam with both sound-insulating and sound-absorbing properties. Its closed-cell structure makes **soni RESIST** especially suitable for applications where it may come into contact with moisture or humidity.
- ▶ Its special UV stabilizing treatment makes **soni RESIST UV** perfect for outdoor use: The material can be exposed to sunlight and scores with exceptional weathering resistance.



## TECHNICAL DATA

<b>FLAMMABILITY</b>	<ul style="list-style-type: none"> <li>▶ DIN 4102, tested according to B1 (30 and 50 mm) (soni RESIST, NK)</li> <li>▶ DIN 4102, tested according to B2 (soni RESIST UV)</li> <li>▶ Fulfills the strict fire safety standard for the automotive industry (FMVSS 302, DIN 75 200)</li> <li>▶ ISO 3795, burning rate &lt; 100 mm/min</li> </ul>
<b>TEMPERATURE RESISTANCE</b>	▶ -50°C to +80°C (short-term: up to 100°C for 30 min per day)
<b>THERMAL CONDUCTIVITY / ISO 8301</b>	▶ ≤ 0.082 W/(m·K) at -5°C
<b>THERMAL STABILITY / SHRINKAGE ISO 2796</b>	▶ D3575-08 Suffix s, 24 hours < 3% at 70°C
<b>WATER ABSORPTION / UNI EN 12088</b>	▶ Water pick up by diffusion (RH > 95% after 28 days) < 4% Vol. Advice: In case of direct weather exposure, the cut edges and the exposed side need to be covered.

## DIMENSIONS

PRODUCT	THICKNESS / TOLERANCE [mm]	SHEETS / TOLERANCE [mm]	WEIGHT PER SHEET
RESIST	25, 50 -0/+8	1000 X 500 ± 5	315 g / 630 g
RESIST UV	50 -0/+8	1000 X 500 ± 5	630 g

## OPTION

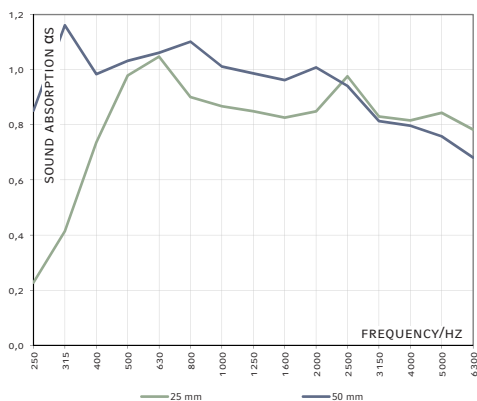
- ▶ RESIST sk: Self-adhesive layer. When mounted overhead or on uneven or curved surfaces, mechanical fixation is required.

## BENEFITS

- ▶ Good sound insulation and sound attenuation effects
- ▶ Low water absorption / Does not offer a substratum for the growth of bacteria or mold
- ▶ Good flammability characteristics (B1 fulfilled, soni RESIST)
- ▶ Very good stability and sturdiness
- ▶ Dirt-repellent and easy to clean
- ▶ Good weathering and uv resistance (soni RESIST UV)

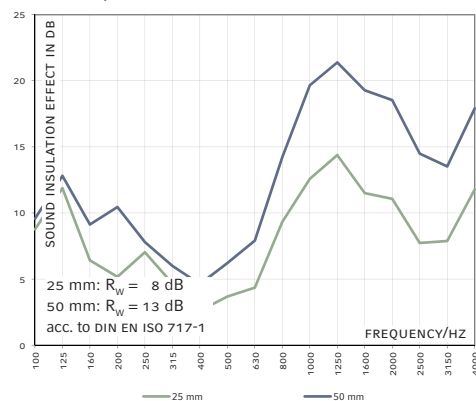
## REVERBERATION ROOM

- ▶ Based on DIN EN ISO 354



## SOUND TRANSMISSION LOSS

- ▶ Test procedure similar to DIN EN ISO 10140-2



## PLEASE SEE OUR PROCESSING AND STORAGE INSTRUCTIONS

Details and values given in this leaflet are average values and have been compiled with care. They are not binding, however, and Cellofoam International GmbH & Co. KG disclaims any liability for any damages and detriments, also in connection with any third party's rights. The information given does not release the buyers from making the necessary experiments and tests themselves. Subject to technical changes. For updates please go to our website.

Cellofoam International GmbH & Co. KG  
Business unit soniflex  
P: +49 7351 340 28 61  
sales@soniflex.de / www.soniflex.de

## VERSION 03/21

Distribution partner for Switzerland:  
soniflex Switzerland  
P: +41 44 377 60 50  
einkauf@soniflex.ch / www.soniflex.ch